



## Your Wearable Music Remote

### What's In The Box?

- Chubby Buttons Music Remote & Battery (CR-2032)  
**Requires installation: Unscrew battery cap with coin or fingers and place battery with (+) facing up. (Battery will not clip in). Tighten cap.**
- Armband
- Lanyard
- Welcome guide

### Practical Uses

Chubby Buttons makes your music moments easier to enjoy while on your arm and off. With the armband, sports are a breeze, particularly cold weather sports and other activities that require gloves like:

- Skiing, snowboarding, cross-country, mountaineering, and snowmobiling
- Boxing & other martial arts
- Gardening, and home-improvement

Without the armband, Chubby can stick to smooth surfaces, allowing you to control your music in your home, while at work, or while driving your car.

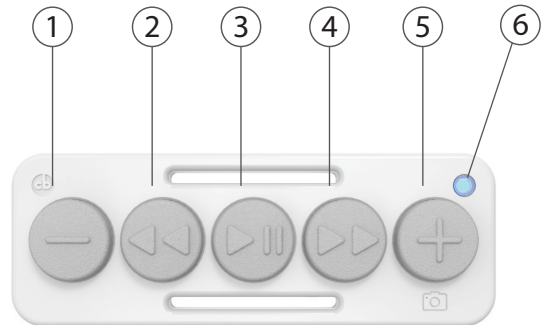
Also stick it to:

- Bathroom mirrors, kitchen cabinets, shower tiles, dining tables, or the mirror at your gym or fitness class.

### Specifications

Product Model	Chubby Buttons v1.0
Bluetooth Standard	Bluetooth 4.0 (BLE)
Product Size	4.25" x 1.54" x 0.62"
Battery / Use Time	3-5 months
Operating Range	Up to 20ft

### Product Overview



1. Volume Down
2. Reverse Track
3. Play / Pause
4. Forward Track
5. Volume Up / Camera Shutter
6. Indicator Light

### How to Pair Your Chubby With Your Device

1. Press the Play/Pause button for 5 seconds to enter pairing mode. The device will enter pairing mode indicated by a quick flashing blue light.
2. Activate your device's Bluetooth function and search for "Chubby Buttons." Select it!
3. After successful pairing, the indicator light will turn off.

If you wish to pair with a new device:

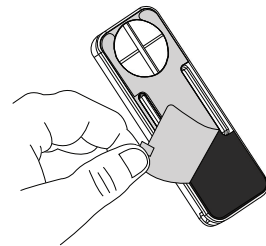
1. Turn off bluetooth on original device.
2. Put Chubby into pairing mode.
3. Pair with new device.

### Using Chubby Without the Armband:

**First remove the protective backing**

"Nano-stick" your Chubby to smooth surfaces:

- Bathroom mirror
- Any table or desk
- Refrigerator or vent above cooking area
- Car dash or display

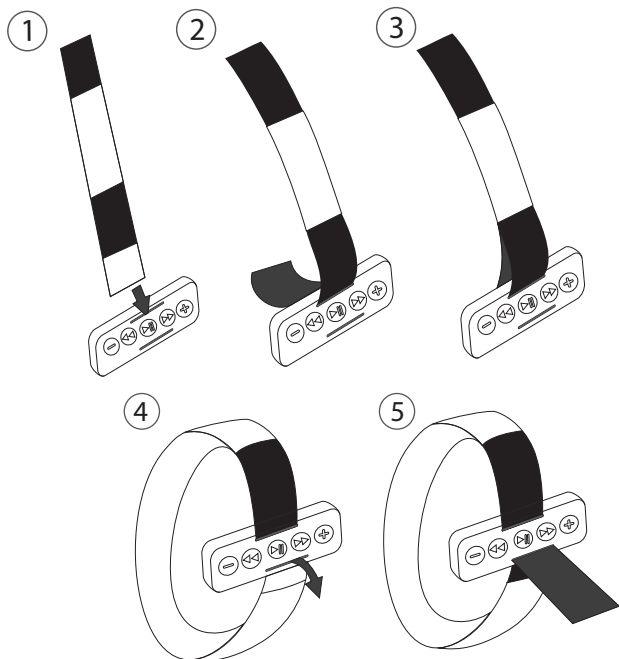


Attach your Chubby with the lanyard to your:

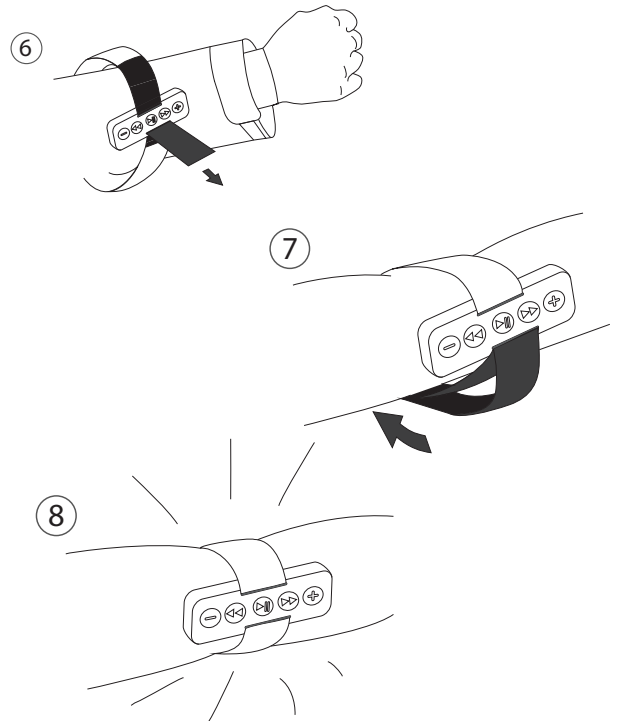
- Keys
- Backpack
- Carabiner

We love learning new ways that our users rock their Chubby Buttons, so #showyourchubb

## Using chubby with Armband



Page 7



Page 8

## Important Functions

Action	Status	Led indicator
Hold "play/pause" for 5+ seconds, then release	Pairing mode	Fast blinking blue light
Press any button	Performs designated function, or reconnects with device if nothing pressed for 60 minutes	Single green pulse
Hold "vol +" and "vol-" together for 10+ seconds, then release	Enter DFU Modes (only do this if we email you with a firmware update)	Slow blinking blue light
n/a	Battery low	Blinking red light

Page 9

## Usage & Care Tips

- Your Chubby can get wet! But not that wet. It can definitely take on the snow and rain, the light drizzle of a shower, and of course your hard earned sweat. Don't take it for a dive though. Chubby doesn't know how to swim.
- Keep your Nano-Stick in tip-top shape by giving the black padding a quick wipe with a moist sponge to get rid of any dust.
- To sustain the life of your battery, don't keep your Chubby in high temperatures (140°F/60°C) for an extended amount of time.

Page 10

## Contact Us

For any inquiries or issues concerning your Chubby Buttons device, email us at [support@chubbybuttons.io](mailto:support@chubbybuttons.io) and we'll respond to you as soon as possible.

Check us out at [www.chubbybuttons.io](http://www.chubbybuttons.io)  
follow us on Instagram at [@chubbybuttons](https://www.instagram.com/chubbybuttons)

## Statement

Please note that unauthorized reselling of Chubby Buttons products is prohibited.

Page 11

## FCC Statement:

This device complies with Part 15 of the FCC Rules. Operation is subject to the following two conditions:

- (1) This device may not cause harmful interference, and
- (2) This device must accept any interference received, including interference that may cause undesired operation.

Warning: Changes or modifications not expressly approved by the party responsible for compliance could void the user's authority to operate the equipment.  
NOTE: This equipment has been tested and found to comply with the limits for a Class B digital device, pursuant to Part 15 of the FCC Rules. These limits are designed to provide reasonable protection against harmful interference in a residential installation.

Emission Tests Passed: FCC Part 15 Subpart B (per ANSI C63.4:2014) Industry Canada ICES-003 Issue 6, April 2017; for a class B device

Page 12